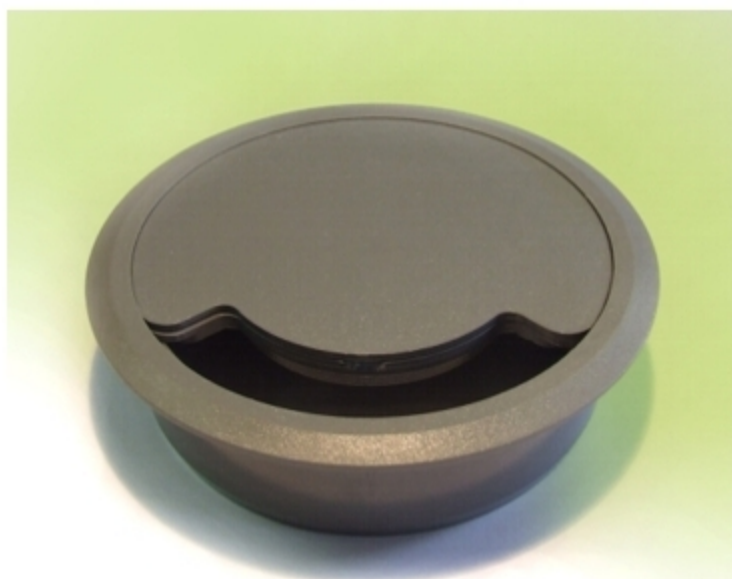


100mm Grommet



TECHNICAL SPECIFICATION:	100mm
Overall diameter of bezel:	110 mm
Fixing hole required:	95 mm
Flange depth below surface:	28 mm
Bezel thickness above surface:	3 mm
Inside diameter of flange:	89 mm
Max. cable diameter:	12 mm

Description

The grommet consists of an outer flange, which push-fits into a circular aperture provided in the raised floor. The outer flange will allow a hand to pass through it to access the floor void. The grommet has a top-assembly which is snapped into the outer flange. The top assembly has a cover which rotates to reveal a 15mm slot which can be set from 0 to 80mm. The cables are passed through the slot prior to the top assembly being inserted within the outer flange.

The selection of an appropriate length slot promotes a clean and tidy appearance.

COLOURS

Black or Grey